

Global Logistics Company
Sun kwang
Newport Container Terminal



Sun kwang Newport Container Terminal
707, Incheonsinhang-daero, Yeonsu-gu, Incheon 22031, Korea
Tel. +82-32-724-1200

Contents

- Greetings from CEO 4
- Milestones 6
- Location map 8
- Development plan of Incheon newport 10
- Terminal Layout 12
- Facility 14
- Equipment 16
- Terminal operation system 18
- Competitiveness 20



□ Greetings from CEO

Global No.1 service

We always make full efforts to enhance Customer value with creative logistics service

Sun Kwang has grown up as a logistics specialist company by devoting all the capabilities of company only into logistics industry since it's foundation in 1948, and based on years of experience and know-hows, we became the leading logistics company due to continued management innovation and top quality of port logistics services.

We extended business scope of stevedoring and storage business to include container business by establishing container terminal at the South Port of Incheon to meet increasing demand of trade volume to/from China and to contribute to the development of national economy.

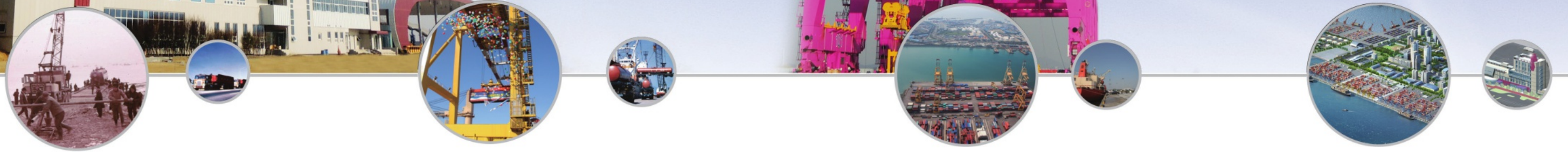
Sun Kwang will make an every effort to provide more competitive logistics services for the customers value by the construction and operation of Incheon Newport Container Terminal

We would like to ask your continuing support and interest in maintaining a good partnerships.

Thank you,

Chairman **Shim, jang shik**

Milestones



- Apr. 1948** Established Sun Kwang Co.,Ltd.
- Oct. 2005** Commenced commercial operation of SICT
- Apr. 2009** Commenced construction works of Incheon Newport
- Apr. 2010** Selected as a terminal operator of Incheon newport phase I-1(B)
- Sep. 2010** Established Sun Kwang Newport Container Terminal Co., Ltd.(SNCT)

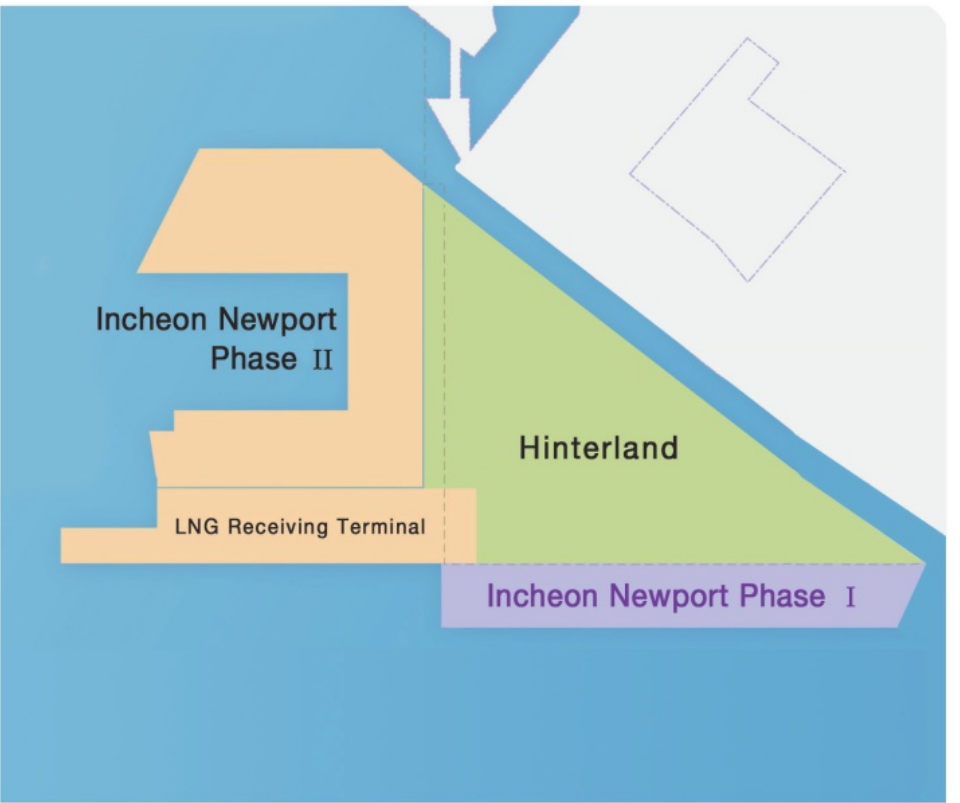
- Nov. 2014** Installation of stevedoring equipment (5 STS 14 ARMG)
- Dec. 2014** Completion of terminal construction works
- Apr. 2015** Terminal integration test
- Jun. 2015** Commence commercial operation of SNCT
- Dec. 2016** Full-scale operation of SNCT

Location map



- Project : Construction Works of Incheon Newport Phase I-1
- Location : Southern Coast of Song-do Newtown, Incheon
- Scale : Total Area 48Ha, 3 Container Berths
- Construction : 2011~2015
- Opening : Jun. 2015

Development plan of Incheon newport



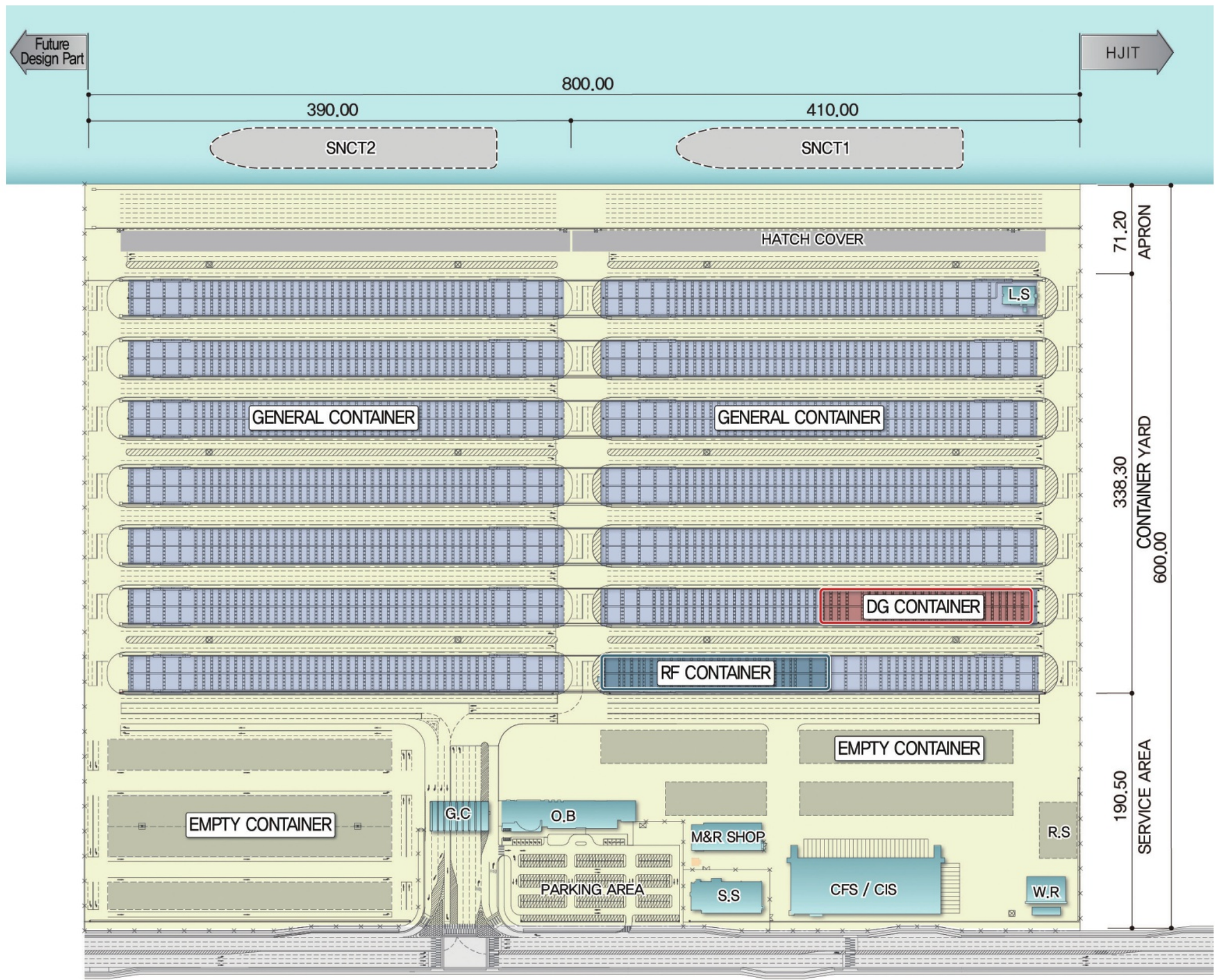
• Terminal (Berths)

Item	yr2017	yr2025	Future	Total
Container (quay length)	6 (1.6Km)	6 (1.7Km)	13	25
General cargo	-	-	4	4

• Hinterland

Item	Phase I (yr2020)	Phase I-2 (Future)	Phase II (Future)	Phase III (Future)	Total
area (1,000m2)	2,118	397	1,519	2,158	6,192

Terminal Layout



Stacking capacity

General	33,759TEU
Reefer	1,080TEU
Dangerous goods	396TEU
OOG/BB	100TEU
Empty	8,735TEU
Total	44,070TEU

Handling capacity

1.2 mil,TEU/yr

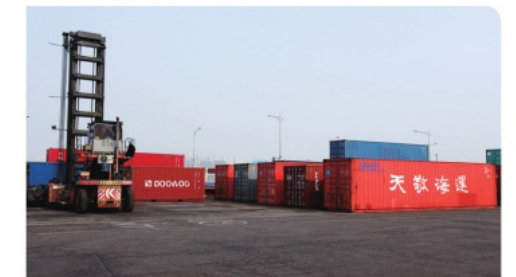


SNCT, the biggest container terminal of Incheon port has secured various convenient facilities to provide our customers with the time & cost efficient port logistics services

- Caisson type quay structure
- Essential facilities for one-roof terminal service
Eg. Automated gate complex, Reefer & DG stacking area, CFS/CIS, X-ray inspection center, Container repair area & wash rack and etc.



Automated gate complex



Container repair area & wash rack



CFS / CIS



Reefer container stacking area

- Specifications of facility

Item	Description	Remarks
Quay length	m 800	
Front depth	m -16	
Channel depth	m -16	
Terminal area	m ² 480,000	800m x 600m
Reefer point	개 720	440VAC
DG Block	m ² 4,690	396TEU
CFS/CIS	m ² 6,001	
Gate complex	Lane 9	Incl.OOG lane(1)
Stacking capa.	TEU 44,070	
Annual Handling capacity	TEU 1,200,000	



- No. of unit : 22 Row x 5
18 Row x 2
- Out reach : 65M / 51M
- SWL : under Spreader 65T / 50T
under Hook beam 80T / 65T

STS

Super post-Panamax class Quay crane designed for 22 row container vessel
Improved Productivity by Twin spreader & up-to-date automation technologies



ARMG

- No. of unit : 28
- Unmanned remote control system
- 9 Row - 5 Tier / 9 Row - 6 Tier
- SWL : 40T



Yard tractor / Yard chassis

- No. of unit : 43 / 67
- 20', 40'



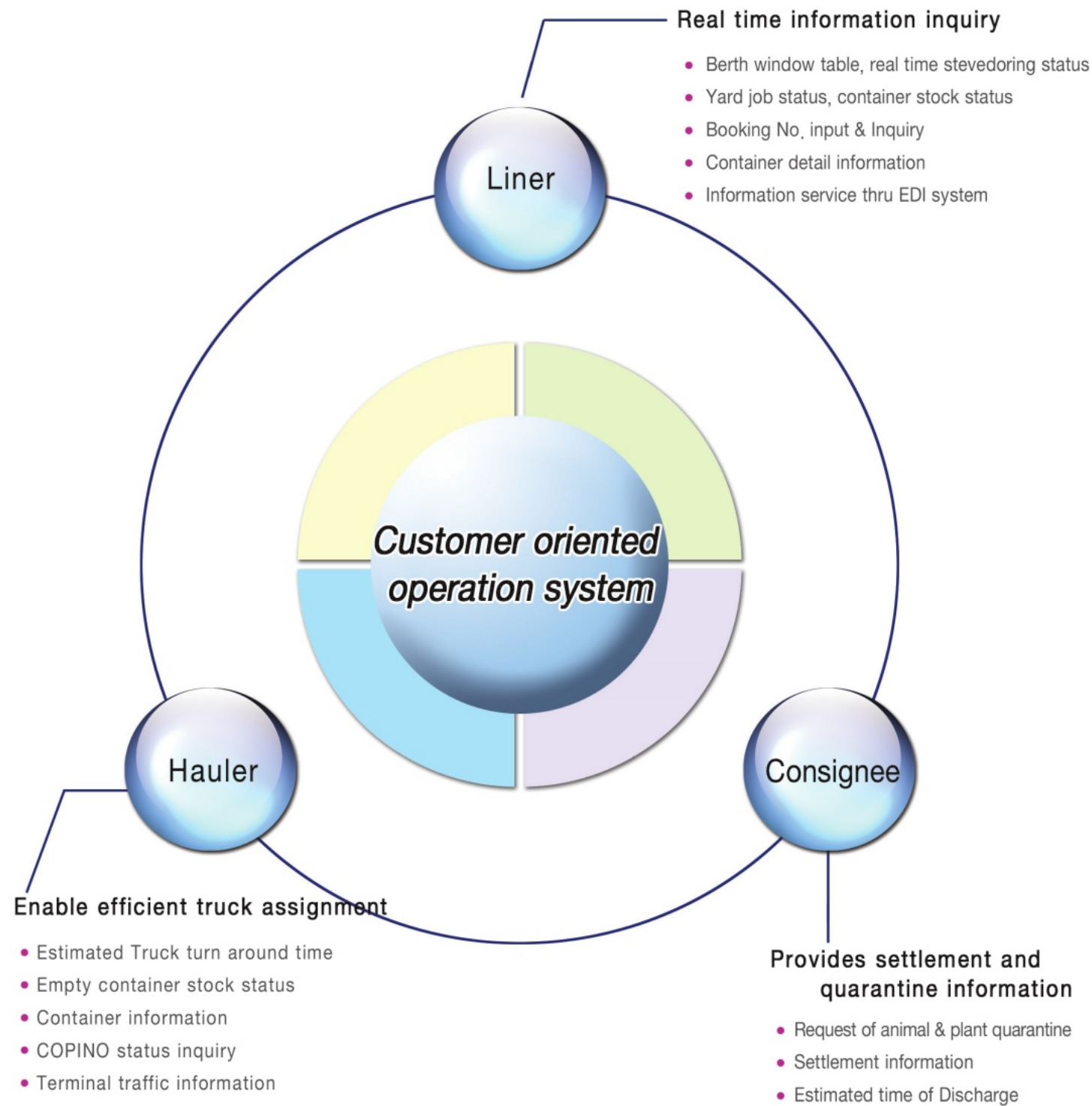
Reach stacker

- No. of unit : 3
- 5 Row - 5 Tier
- SWL : 40T

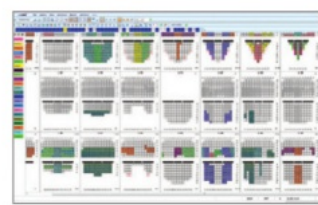
• Specifications of equipment

Item	Total	Remarks
STS	unit 7	SWL 65T
ARMG	unit 28	
Yard Tractor	unit 43	
Yard Chassis	unit 67	
R/S, E/H	unit 6	
Fork Lift	unit 9	

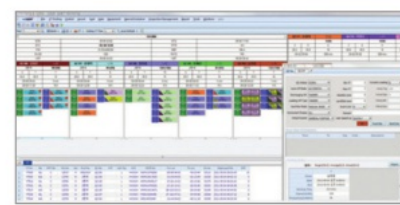
Terminal operation system



Main Page



Berth allocation

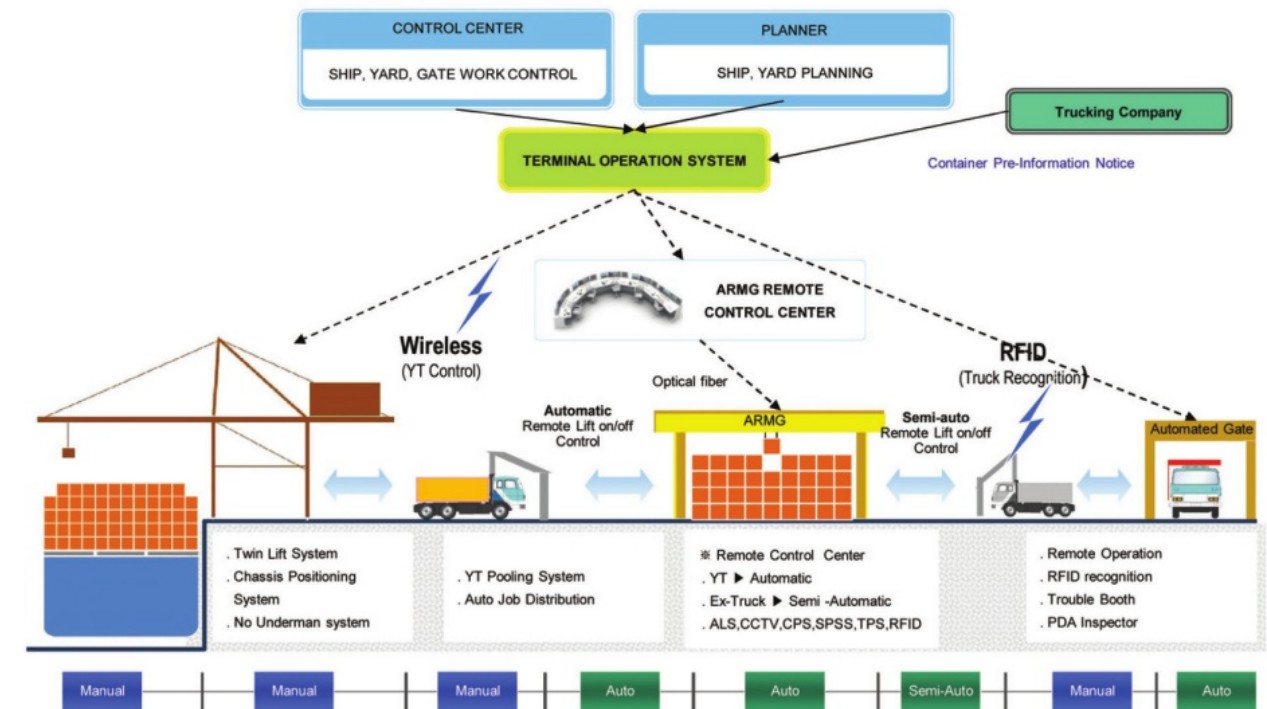


QC & YT Monitoring

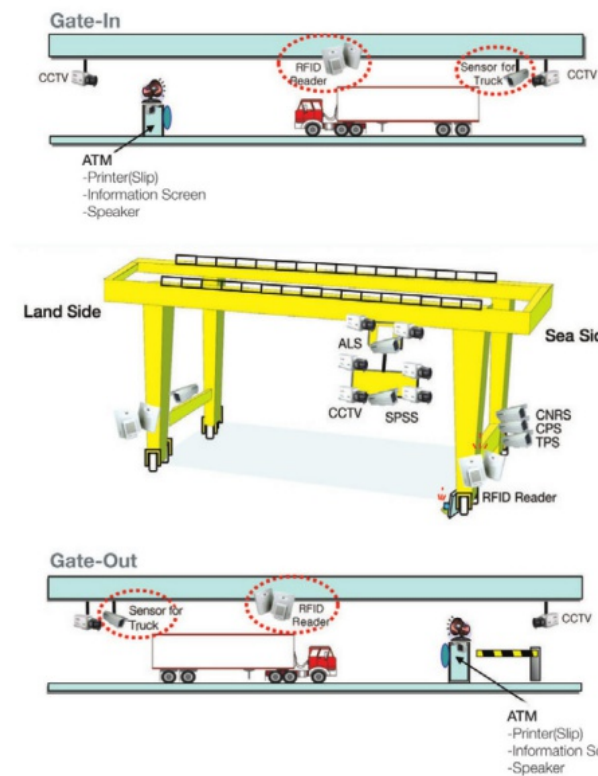


Mobile application

Automation Infra-structure & Workflow



Yard Automation System in detail



Name	Installation
ALS	<ul style="list-style-type: none"> Automatic Landing System Laser Sensor On Spreader
CCTV	<ul style="list-style-type: none"> Container Position Check Pan/Tilt Zoom Camera On Spreader / Sill beam
CNRS	<ul style="list-style-type: none"> Container Number Recognition System On Sill beam
CPS	<ul style="list-style-type: none"> Chassis Positioning System Laser Scanner On Sill beam
SPSS	<ul style="list-style-type: none"> Stacking Profile Scanning System 3D Laser Scanner On Head block
TPS	<ul style="list-style-type: none"> Truck Protection System Laser Sensor On Sill beam
RFID	<ul style="list-style-type: none"> Radio Frequency IDentification system Truck No. Recognition On Land / Sea side Leg

Competitiveness

Geographical advantage

- Ocean going vessels calling at main ports of north China may easily access to Incheon port with small deviation distance due to it's ideal location amidst yellow sea area
- In case, the vessel make a call at Incheon port, it would leads to the reduction of logistics cost of shipper & consignee in Seoul and metropolitan area by the decreased inland transportation time & cost comparing to Pusan port



- Distance of entrance way to Incheon New port is decreased about 4 n.miles than the inner port, and consequently, it enables to save port charges & fuel cost

P/S → New port : 11 n.mile
 → South port : 13 n.mile
 → Inner port : 15 n.mile

- Safe entrance channel

Ensure safe passage along the entrance channel against adverse weather conditions, such as dense fog, wind storm, due to it's location outside the Incheon grand bridge.



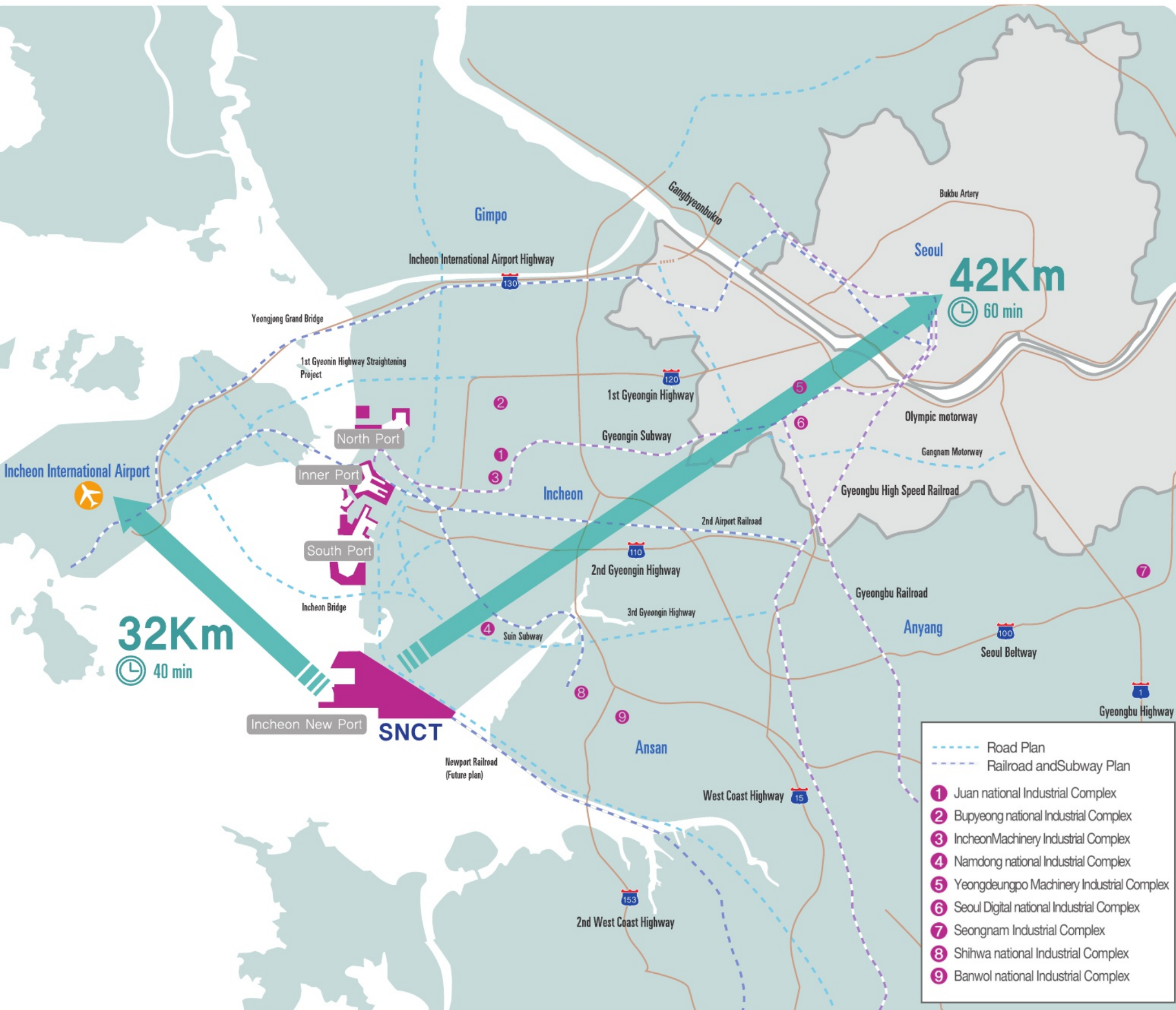
- Distance between major ports

Unit : N.Mile

Port	Incheon (㉠)	Busan (㉡)	diff.(㉠-㉡)
Dalian	280	543	-263
Tianjin	444	688	-244
Qingdao	328	502	-174
Shanghai	502	492	+10
Shenzhen	1,190	1,140	+50
Rotterdam	10,840	10,791	+49

Source : www.sea-distances.org

Competitiveness



✓ Connectivity & Container volume

- Streamlined traffic connectivity to/from metropolitan city & Incheon airport by 7 highways and Grand bridge
- Prompt transportation system connecting industrial complexes of 10,000 companies in hinterland
- Abundant container volume of abt. 5 mil,TEU per year in the vicinity including Seoul metropolitan area, Chungcheong and Gangwon province

◆ Incheon port ↔ Seoul & Vicinity

- Gyeongin Highway
- 2nd Gyeongin Highway
- 3rd Gyeongin Highway
- Seoul beltway
- 2nd Seoul beltway (under construction)
- Yeongdong Highway
- Seohaean Highway
- 2nd Seohaean Highway

◆ Incheon port ↔ Incheon Airport

- Incheon grand bridge
- Yeongjong grand bridge



Sun kwang Newport Container Terminal



✓ ONE-STOP service

- Fully secured container handling facilities inside the terminal
 - Operation building, CFS,/CIS, Container repair & wash rack, X-RAY inspection center, PQ zone, Reefer / DG container block, OOG/BB stacking area
- Prompt customs & quarantine clearances
- Cost and Time saving for the container operation
 - Free transportation charge inside terminal
 - No further delay of cargo operation and arrangement
 - Minimized container storage cost



CFS



CIS



Reefer area



Container repair area



wash rack



DG area



THE WORLD

LEGEND

	Continental Boundary
	International Boundary
	State/Provincial Boundary
	Water Boundary
	Main Road
	Air Route
	Shipping Route
	National Capital
	Over 20,000,000 (Persons)
	10,000,000-20,000,000 (Persons)
	Under 10,000,000 (Persons)

Published by The National Geographic Information Institute
Ministry of Land, Transport and Maritime Affairs, The Republic of Korea(2008)
<http://www.nagis.go.kr>